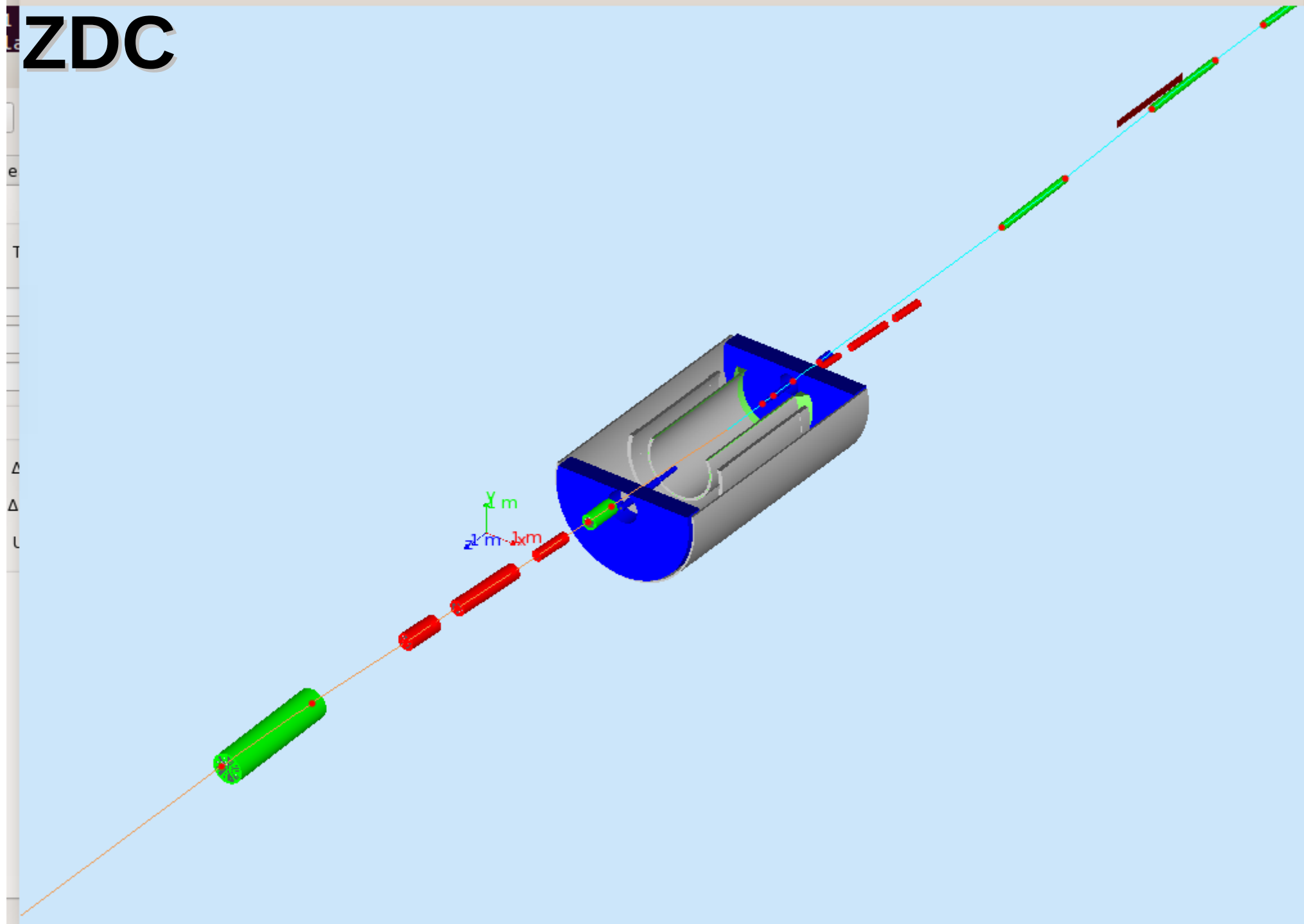
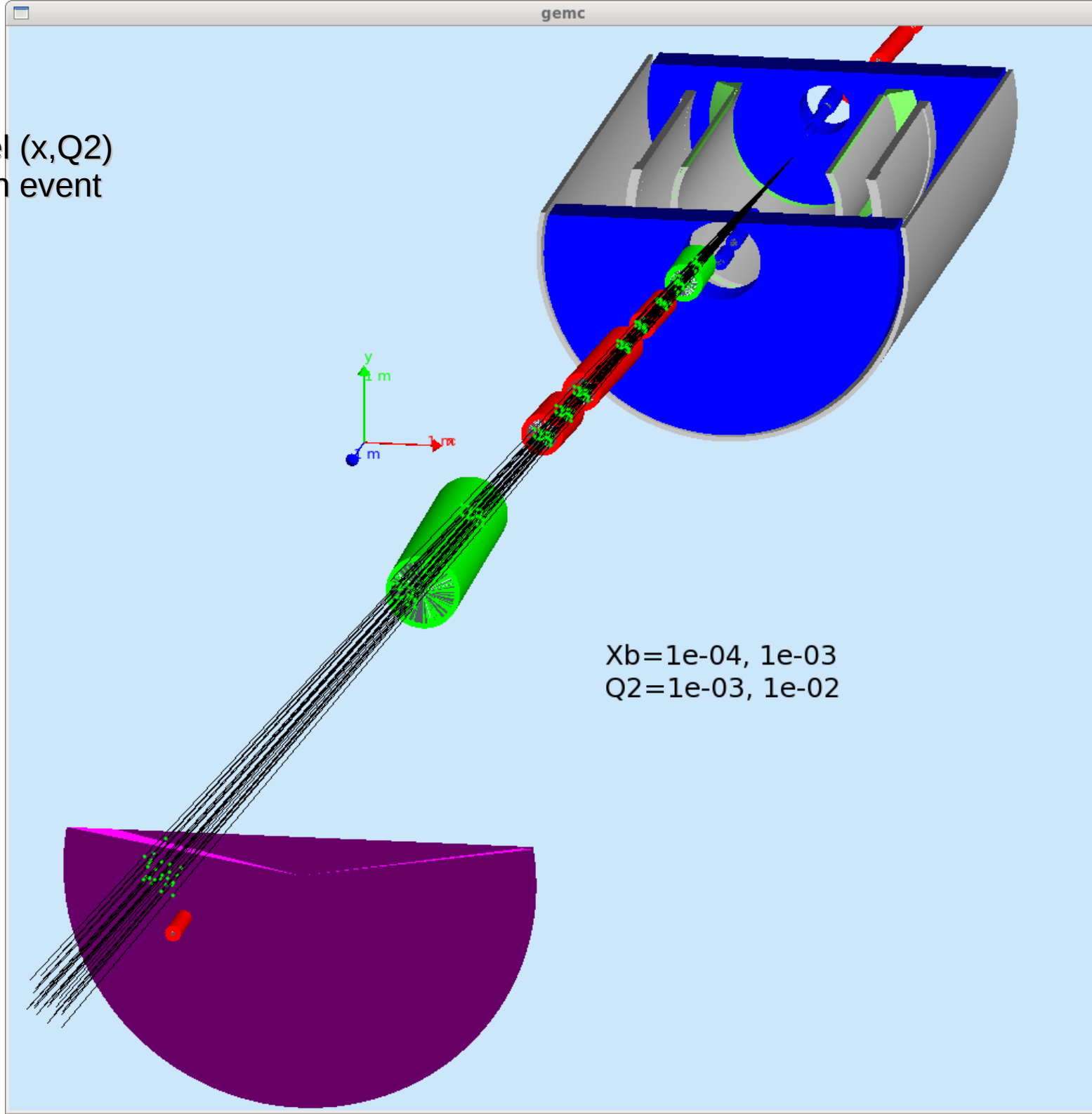


# ZDC

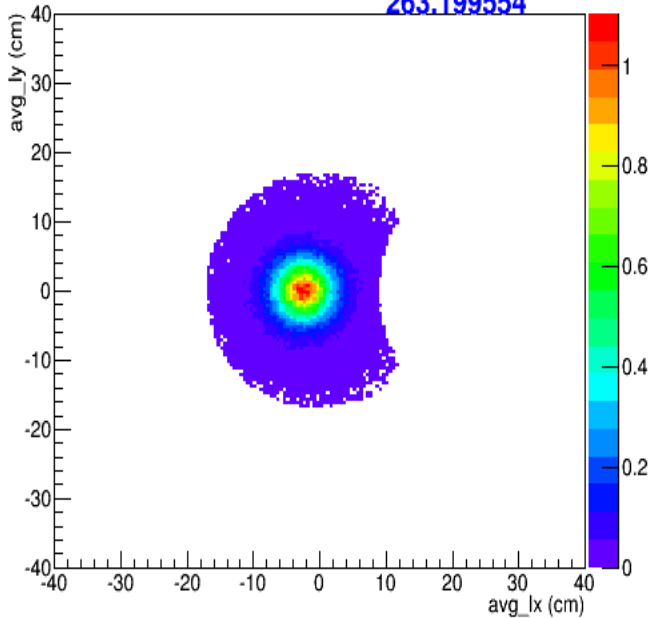


# PYTHIA

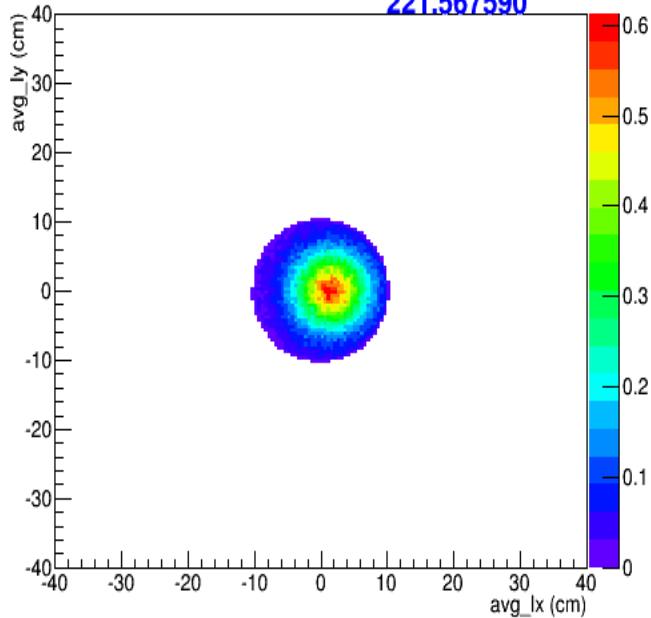
- 1) e:P=5:100GeV
- 2) standard GVMD model (x,Q2)
- 3) 5M event, only neutron event selection



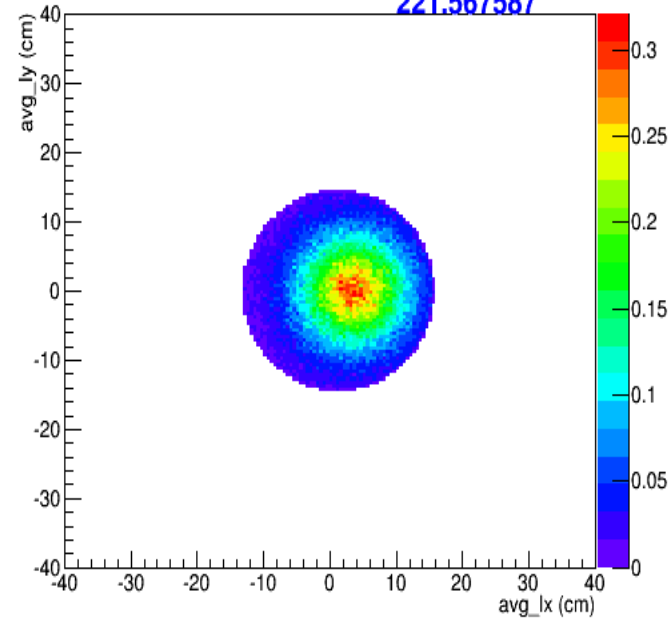
XSEC of ion downstream dipole 1 back  
263.199554



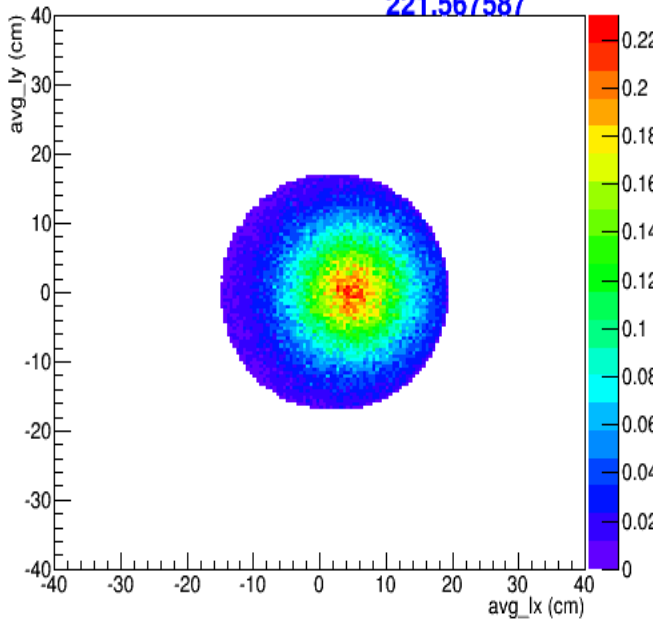
XSEC of ion downstream quadrupole 1 back  
221.567590



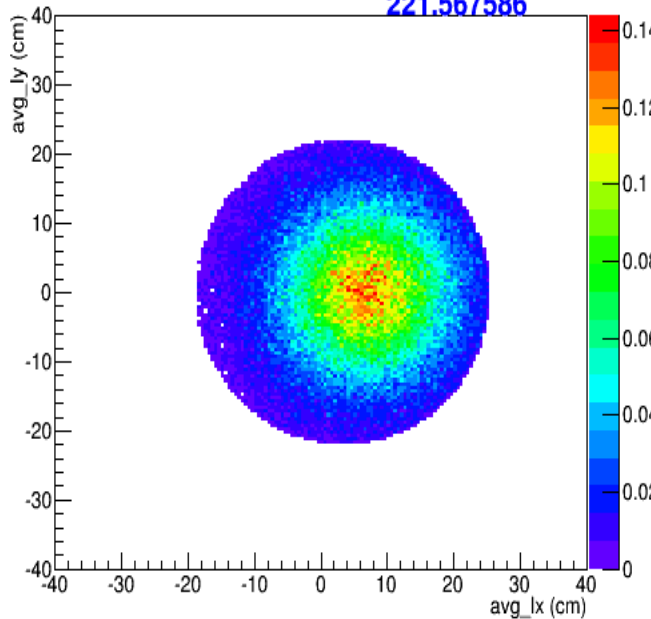
XSEC of ion downstream quadrupole 2 back  
221.567587



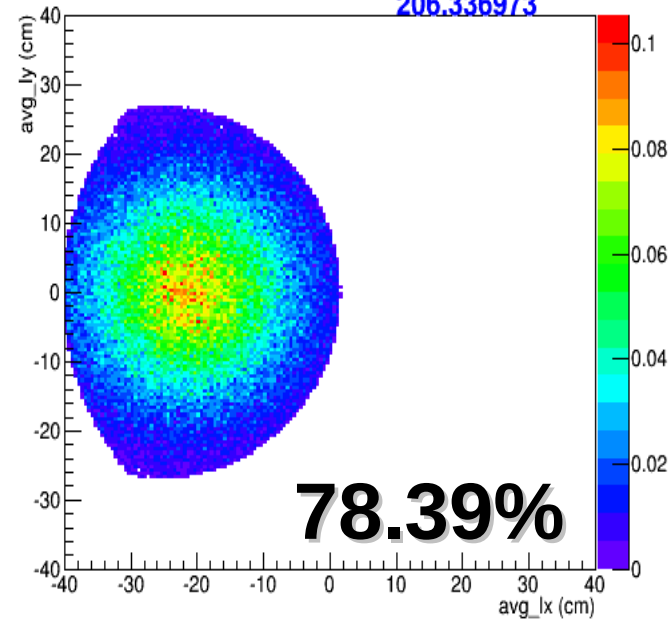
XSEC of ion downstream quadrupole 3 back  
221.567587



XSEC of ion downstream dipole 2 front  
221.567586



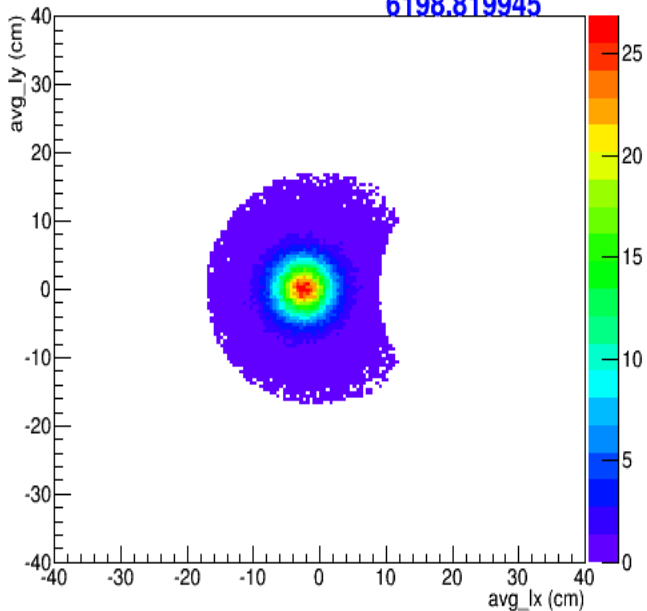
XSEC of ion downstream dipole 2 back  
206.336973



\*\* event weighted by cross-section

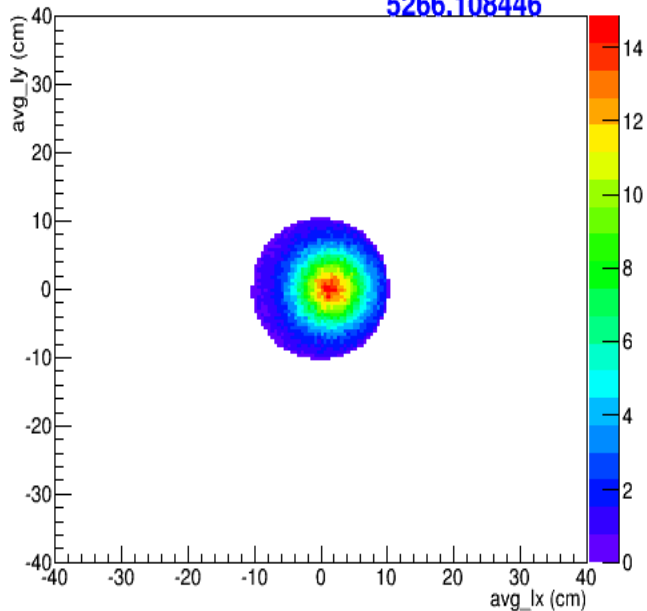
PHOTON FLUX of ion downstream dipole 1 back

6198.819945



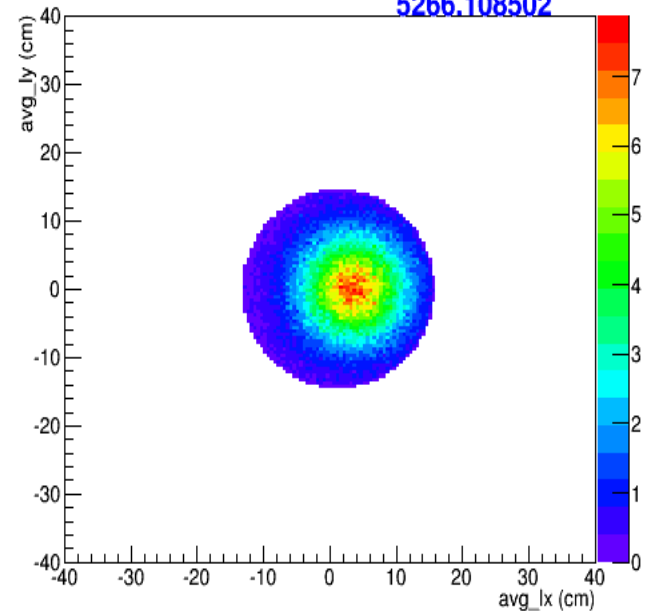
PHOTON FLUX of ion downstream quadrupole 1 back

5266.108446



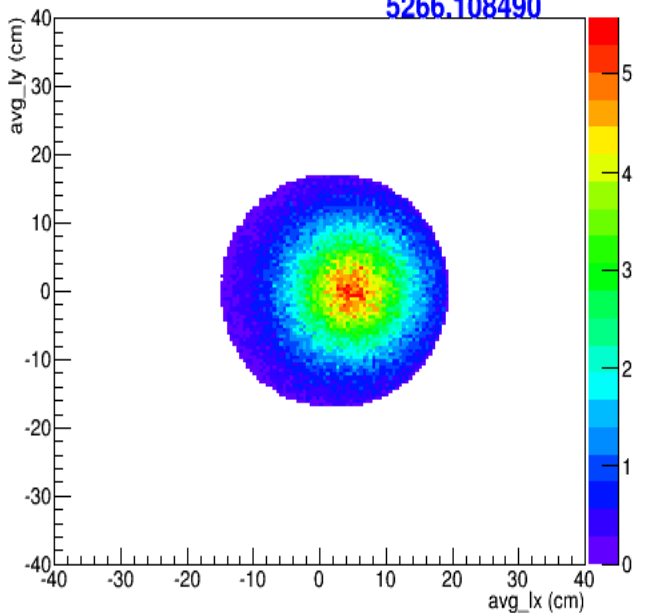
PHOTON FLUX of ion downstream quadrupole 2 back

5266.108502



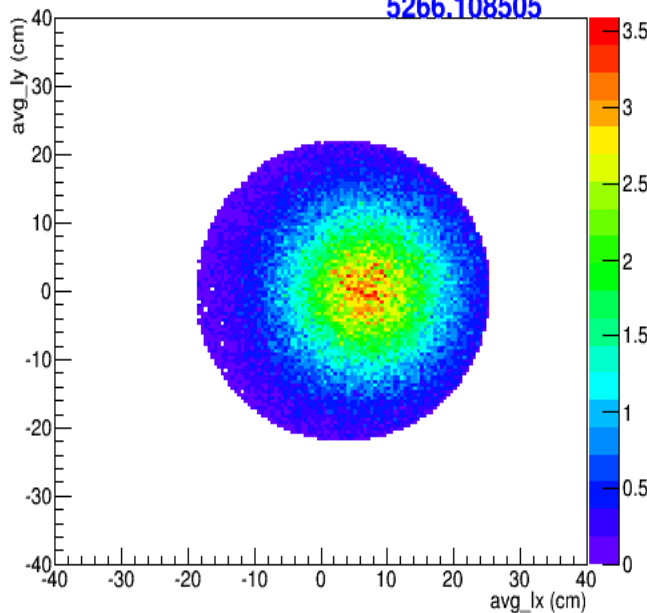
PHOTON FLUX of ion downstream quadrupole 3 back

5266.108490



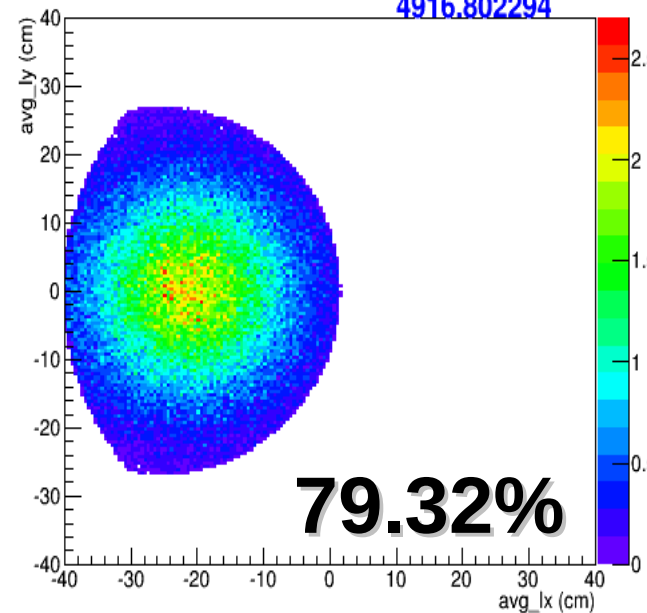
PHOTON FLUX of ion downstream dipole 2 front

5266.108505



PHOTON FLUX of ion downstream dipole 2 back

4916.802294



\*\* event weighted by photon flux factor VINT(319)